

Sierra Way pavement 30 wide
 4\"/>

Allen St. pavement 24 wide
 5\"/>

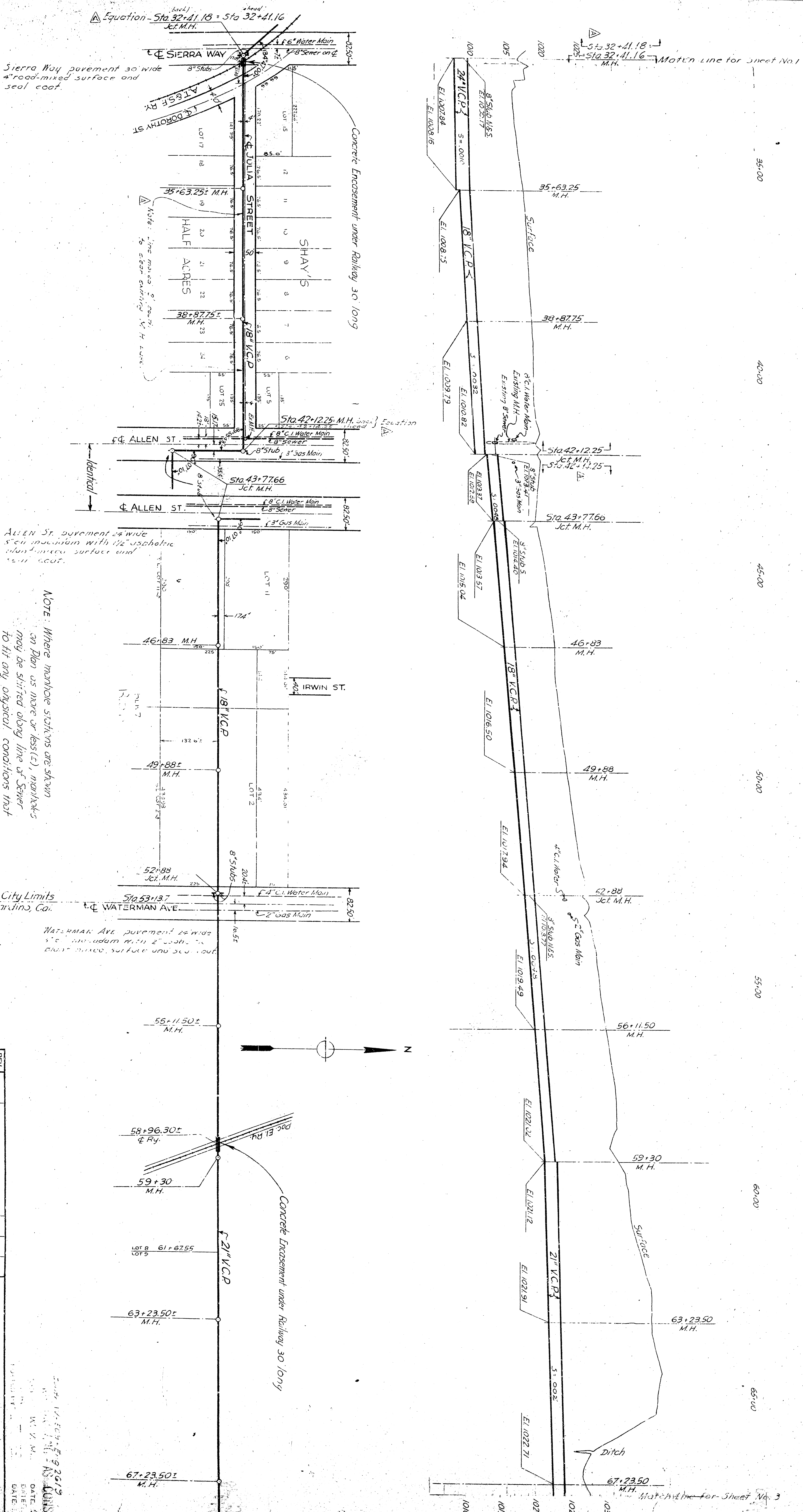
Waterman Ave pavement 24 wide
 5\"/>

NOTE: Where manhole stations are shown
 on Plan as more or less (+), manholes
 may be shifted along line of Sewer
 to fit any physical conditions that
 may exist on ground. If, for any reason,
 such a shift is necessary, elevation of
 manhole invert must be corrected to fit
 new location.

REV. NO.	DATE	REVISION	REV. CHK. APP.
1	12-27-41	AS SHOWN	

SUBMITTED BY: <i>[Signature]</i> FILE NO. 544748 DRAWN: <i>[Signature]</i> CHECKED: <i>[Signature]</i> IN CHARGE: <i>[Signature]</i>	APPROVED BY: <i>[Signature]</i> DATE: 9-25-42 SHEET NO. 2 IN 5 SHEETS
--	--

SAN BERNARDINO AIR DEPOT
 MILITARY CONSTRUCTION
 SAN BERNARDINO, CALIF.
 OUTFALL SANITARY SEWER
 PLAN AND PROFILE NO. 2
 U. S. ENGINEER OFFICE LOS ANGELES, CALIF. APRIL 1942



Equation - Sta. 32+41.18 = Sta. 32+41.16
Jct. M.H.

Sierra Way pavement 30 wide
4" road-mixed surface and
seal coat.

Concrete Encasement under Railway 30' long

SHAY'S
HALF ACRES

Allen St. pavement 24 wide
5" c. subgrade with 1/2" asphaltic
dust-covered surface and
seal coat.

Waterman Ave pavement 24 wide
5" c. subgrade with 1/2" asphaltic
dust-covered surface and seal coat.

NOTE: Where manhole stations are shown
on Plan as more or less (+), manholes
may be shifted along line of Sewer
to fit any physical conditions that
may exist on ground. If, for any reason,
such a shift is necessary, elevation of
manhole invert must be corrected to fit
new location.

REV. NO.	DATE	REVISION	REV. CHK. APP.
1	12-27-24	AS SHOWN	

SAN BERNARDINO AIR DEPOT
MILITARY CONSTRUCTION
SAN BERNARDINO, CALIF.

OUTFALL SANITARY SEWER
PLAN AND PROFILE NO. 2
IN 5 SHEETS
SHEET NO. 2

U. S. ENGINEER OFFICE LOS ANGELES, CALIF. APRIL 1942

SCALE: HORIZ. 1"=100'-0"
GRAPHIC SCALE
IN 5 SHEETS

DATE: 9-25-42